

New

ELGO
ELECTRIC

LIMIX

**guided Incremental Linear Encoder
for elevator applications**



The incremental LIMIX measuring system with 2.5 / 1.25 / 0.625 mm resolution was conceived particularly for applications within the elevator range. The guided system, with a guidance body from slidable plastic, is simple to install, moves the scanning sensor optimally over the magnetic tape and provides with its closed lower surface permanently for the correct mounting distance between sensor and magnetic tape.

The plastic body consists of 2 identical halves.

The sensor can be inserted and fastened by conventional M3 screws with its assembly drillings, which are corresponding to the mounting holes at the block halves. The installation of the complete LIMIX system can be made alternatively by the sensor drillings (with extended M3 screws) or by means of 2 additionally mounting holes, existing at the guidance block. In the installed state with sensor, the external dimensions of the guidance block amount to 51 x 22 x 32 mm (L x W x H).

Technical specifications of LIMIX

Resolution:	: 2.5 mm at 1 x resp. 1.25 mm at 2 x or 0.625 at 4 x edge triggering
Repeat accuracy	: +/- 1 Increment
Distance tape/sensor	: given by guidance body
Sensor housing	: Zinc die cast
Protection class	: IP 67
Operation temperature	: - 20°... + 70 °C
Output consumption	: max. 20 mA per channel
Index pulse (each 5 mm/s)	: periodically, depends on operated speed
Necessary magnetic tape	: MB20-50-10-1-R-D (pole distance 5 mm) Please indicate the length in XX.X meters

Power Supply / Output level

11 - Power Supply 5 VDC / Output level 5 V-TTL line driver output

Tolerance of input voltage	: +/- 2,5 %, ripple < 50 mV
Consumption	: max. 200 mA
Operating speed	: max. 5.0 m/sec
max. length of cable	: 10 m

01 - Power Supply 10 - 30 VDC / Output level 5 V-TTL line driver output

Tolerance of input voltage	: stabilized, ripple max. 5 %
Consumption	: max. 150 mA
Operating speed	: max. 5.0 m/s
max. length of cable	: 50 m

00 - Power Supply 10 - 30 VDC / Output level 10 - 30 VDC output

Tolerance of input voltage	: stabilized, ripple max. 5 %
Consumption	: max. 150 mA
Operating speed	: max. 5.0 m/s in case of an optimal evaluation
max. length of cable	: 30 m

Type Designation **LIMIX-XXX-XX.X-XXXX-XX-XXX**

Type

SN - Number

000 = Standard
001 = First special version
002... etc.

Signal cable length XX.X m

Resolution in µm (at 4 x edge triggering)

0625 = 0.625 mm

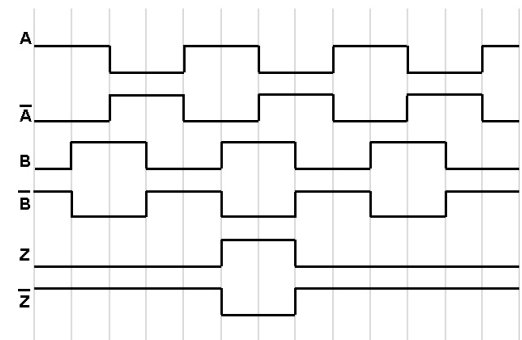
Power Supply / Output levels

00 = 10-30 VDC / 10-30 VDC
01 = 10-30 VDC / 5 V-TTL line driver
11 = 5VDC / 5V-TTL line driver

Optional

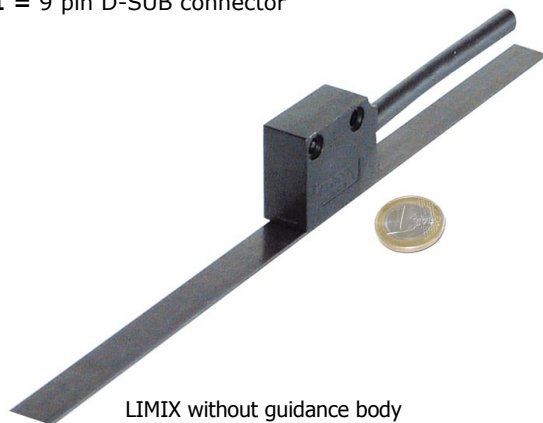
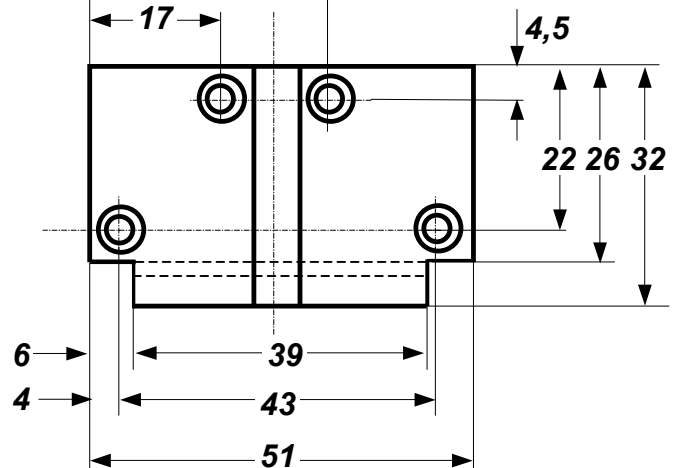
D1 = 9 pin D-SUB connector

Output pulse diagram:



Dimensions:

Width = 22 mm
(with mounted sensor)



LIMIX without guidance body

ELGO - Electric - GmbH
Measure - Control - Position

Carl - Benz - Straße 1, D-78239 Rielasingen
phone.: 0049-7731/93 39 - 0, Fax: 2 88 03
Internet: www.elgo.de, Mail: info@elgo.de

All drillings Ø 3,5 mm with Ø 6 mm
blind holes (double-sided, 3 mm's deep)